



WE PROVIDE CARDING SOLUTIONS



FOR COTTON
FOR WOOLLEN
FOR NON-WOVEN
FOR RAISING FILLET

Hongkong Seow Yi Limited.

Room 2218,Block A , No.1088 XinJinQiao Road,
Shanghai-201206,China

Tel :+86 21 5190 2803

Fax :+86 21 5190 2804

E-mail:nancyzuo2008@live.cn

skype: nancyzuo2008

www.seowyi.com



SEOW YI has been supplying the complete range of card clothing products for all applications to international market since a long time, it's the leading provider of card clothing from China.

Page 1-5 **FOR COTTON**

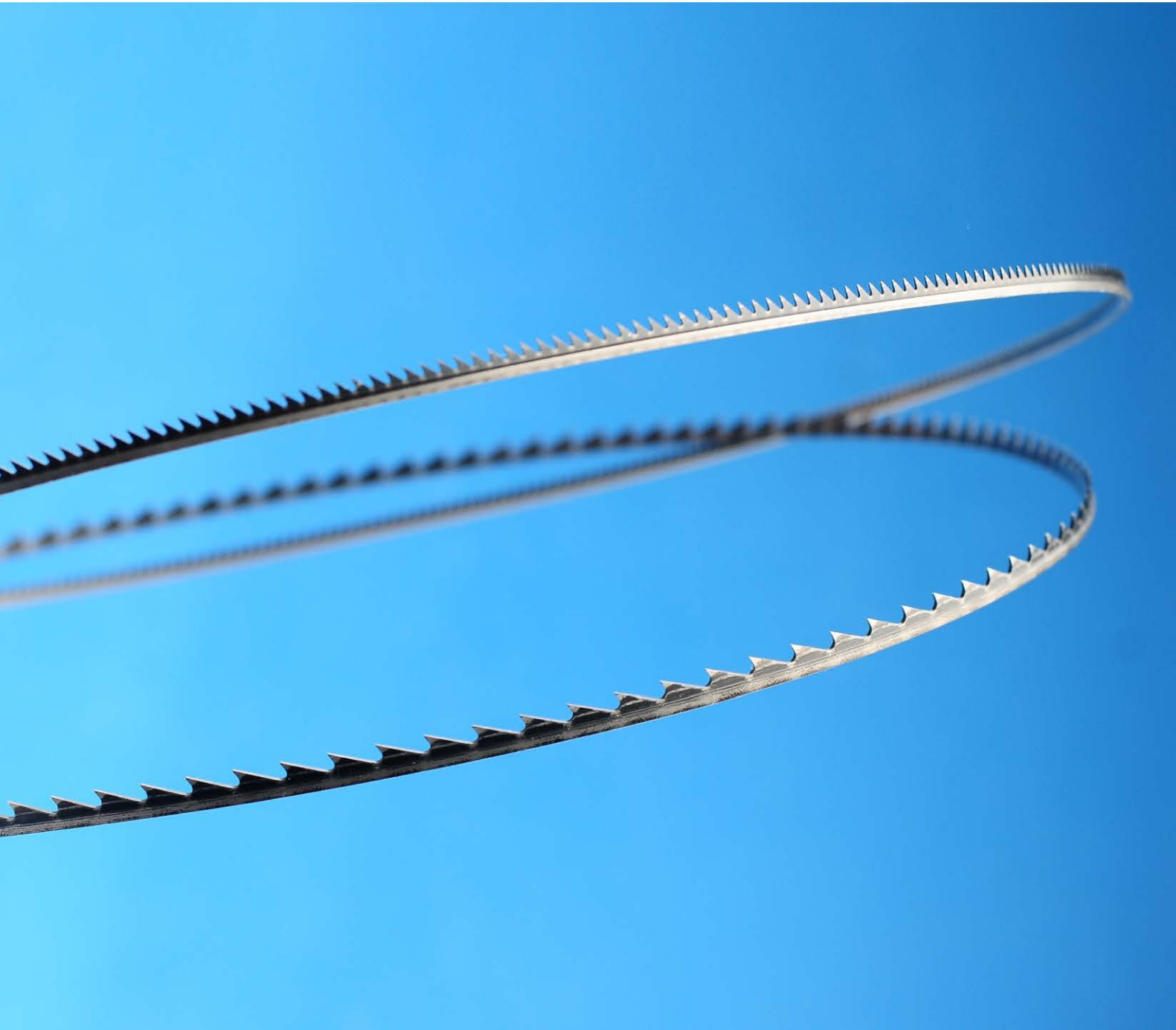
Page 6-9 **FOR NON-WOVEN**

Page 10-15 **FOR WOOLLEN**

Page 16-18 **FOR RAISING FILLET**



- Made of long life alloy steel
- Hi tech punching technology, homogeneous tooth geometry with points and edges free of burrs and formed.
- High sharpness throughout the life span and carding performance
- Advanced hardening process to increase wear resistance
- Less blade thickness and lower tooth depth for better penetration
- Improved wear resistance
- Sharp tips with high hardness



Cylinder wire

Type of Wire	Height	F. Angle	Pitch	Rib	PPSI	Application
C2030 x 1540	2.00	30	1.50	0.40	1075	For medium, fine and super fine cotton
C2035 x 1740	2.00	35	1.50	0.40	949	
C2035 x 1545	2.00	35	1.50	0.45	956	
C2030 x 1550	2.00	30	1.50	0.50	860	For medium, fine cotton
C2035 x 1550	2.00	35	1.50	0.50	860	
C2030 x 1560	2.00	30	1.50	0.60	717	For medium cotton, OE yarn
C2525 x 1560	2.50	25	1.50	0.60	717	For medium cotton, OE yarn
C2530 x 1550	2.50	30	1.50	0.50	860	
C2525 x 1550	2.5	25	1.5	0.5	860	
C2525 x 1560	2.50	25	1.50	0.60	717	
C2520 x 1560	2.50	20	1.50	0.60	717	
C2520 x 1570	2.50	20	1.50	0.70	614	
C2825 x 1360	2.8	25	1.3	0.6	827	For cotton, OE, and man made fibres
C2825 x 1560	2.8	25	1.5	0.6	717	
C2815 x 1560	2.8	15	1.5	0.6	717	
C2810 x 1865	2.8	10	1.8	0.65	551	
C3015 x 1580	3	15	1.5	0.8	537	
C3215 x 1380	3.20	15	1.31	0.80	615	
C3210 x 2080	3.20	10	1.95	0.80	403	

Doffer Wire-Licker in Wire

Type of Wire	Height	F. Angle	Pitch	Rib	PPSI	Application
D4030 x 1880	4.00	30	1.80	0.80	448	For coarse, medium and fine cotton
D4030 x 1890	4.00	30	1.80	0.90	398	
D4030 x 1810	4.00	30	1.80	1.00	358	
D4025 x 1890	4.00	25	1.80	0.90	398	
D4030 x 2090	4.00	30	2.00	0.90	358	
D4030 x 2090G	4.00	30	2.00	0.90	358	For medium, fine cotton, and super fine cotton
D4030 x 1890G	4.00	30	1.80	0.90	398	
D5030 x 2190G	5.00	30	2.10	0.90	341	
D4030 x 2110G	4.00	30	2.10	1.00	307	

Grooved Licker-in Wire

Type of Wire	Height	F. Angle	Pitch	Rib	PPSI	Application
L5500 x 4TPI	5.50	0	6.35	Variable	Variable	For fine, medium man made fibres
L5505 x 4.5TPI	5.50	5	5.60	Variable	Variable	
L5510 x 4.5TPI	5.50	10	5.60	Variable	Variable	For fine, medium cotton
L5510 x 5TPI	5.50	10	5.00	variable	variable	For fine and super fine cotton

Inter Locking Licker-in Wire

Type of Wire	Height	F. Angle	Pitch	Rib	PPSI	Application
L5000 x 6330V	5.0	0	6.3	3.00	35	For man made fibres
L5005 x 6030V	5	5	6.3	3	35	
L5010 x 5030V	5	10	5	3	43	Standard
L5010 x 2621V	5	10	2.6	2.1	120	For Rieter cards
L5020 x 2515V	5	20	2.5	1.5	172	For the 2nd licker in roller
L5020 x 2015V	5	20	2	1.5	215	For the 3rd licker in roller

Blow Room Wires

Plain Rib Type

Type of Wire	Height	F. Angle	Rib	PPSI	Application
L10(-10)x12122	10	100	2.2	24	Crosrol Waste Opener
TR5	5	70	1.5	36	Crosrol Feed Roller
ERM10/10	10	80	2.5	26	Rieter ERM
ERM10/0	10	90	2.5	26	Rieter ERM
ERM20/10	10	80	2.5	14	Rieter ERM
ERM20/0	10	90	2.5	14	Rieter ERM

Inter Locked Type

Type of Wire	Height	F. Angle	Pitch	Rib	PPSI	Application
V6/RA2	5	17	6.6	4.23	23	Crosrol SRFO
V6/TR13	7.5	10	15	4.23	10	Crosrol SRFO
V6/TR14	7.5	10	15	4.23	10	Trutzschler RST
V6/TR2	5.5	20	4.9	4.23	31	Trutzschler CNT,NCM,ABF
V6/TR3	5.5	20	4.9	4.23	31	NCZA Novacotonia
V6/TR5	5.5	20	13	4.23	12	Various Feed roller
V6/TR6	5.5	-36	5.5	4.23	28	Trutzschler SO opener
V6/TR8	5.5	30	6.6	4.23	23	Trutz. SO Opener
V6/TR10	5.5	10	8.5	4.23	18	Trutz. SO Opener
V6/TR11	5	-10	5.5	4.23	28	Trutz. RZ, NCZ, NCZA
V6/TR15	5.5	10	8.5	4.23	18	Trutz.NCZA Novacotonia

OE-Combing Roller wire

Standard Type	Height	F. Angle	Pitch	Rib	PPSI
Os21	3.60	15	3.25	0.90	221
OS21A	4.10	15	3.25	0.94	211
OK61	3.60	15	4.00	0.90	179
OK40	3.60	25	2.62	0.90	274
OK37	3.60	-10	4.70	0.90	153
OK36	3.60	0	4.00	0.90	179
OB20	3.60	25	2.12	0.90	338
OB20-A	4.10	25	2.12	0.94	324



Stationary Flat tops

SF Tops	FD6	FD9	FD14	FD24	FD34	FD42	FD54	FD62
PPSI	60	90	140	240	340	420	540	620

Process	UNDER	FRONT	BACK
OE&Coarse count	FD6	FD14	FD42
Coarse &medium count	FD6	FD24	FD62
Fine&super fine	FD6	FD34	FD62
Synthetic&P/V blends	FD6	FD14	FD42
P/C belends/ Micro Denier	FD6	FD24	FD62



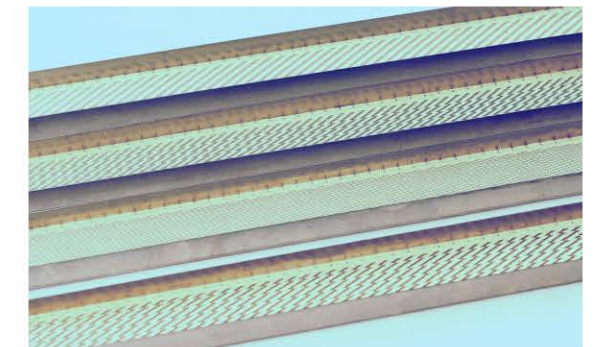
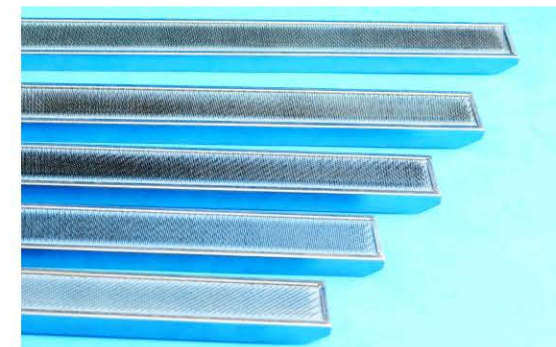
Cleaning Fillets

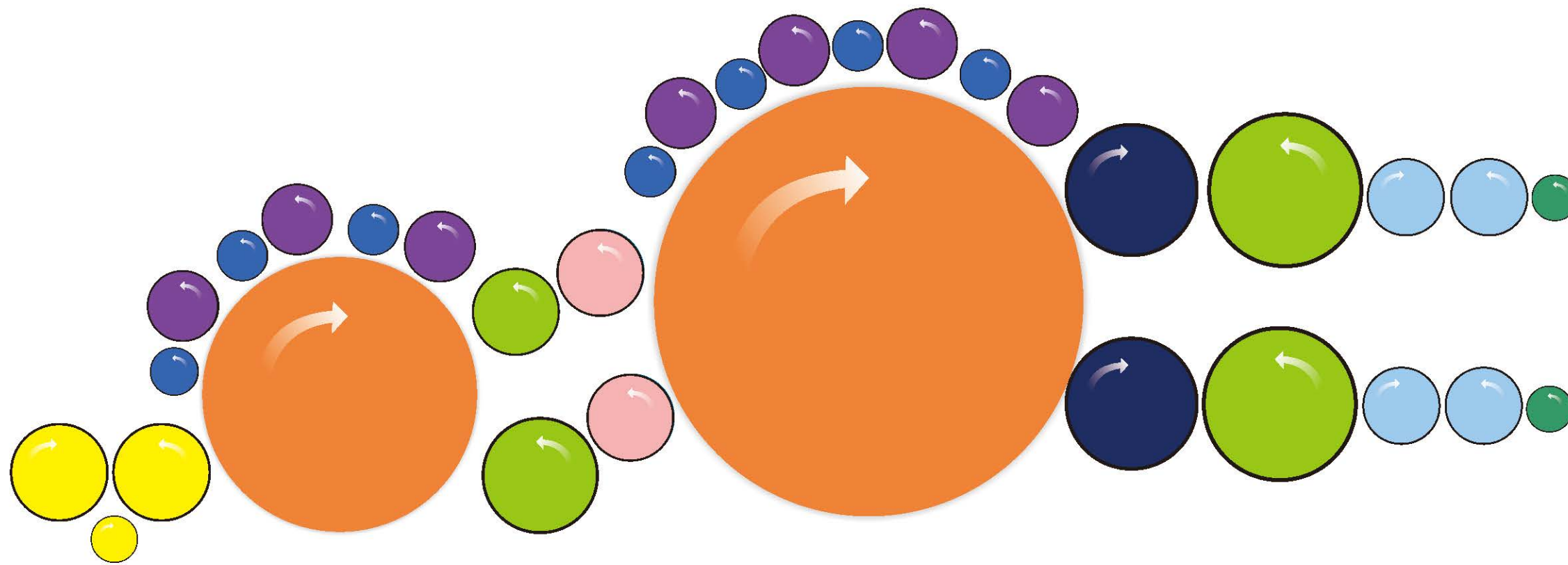
Description	Wire	Foundation	Total Width (mm)	Height (mm)	Length	Qty/m
CROSROL						
8 Row Clipped 1020	26s	4 PLY VIR 1L	33	18	1020mm	2 pcs
Dicky Fillet	33s	3 PLY VIR	20	10	16	16m
RIETER C-1/2 C-1/3						
8 Row Clipped 1010	26s	4 PLY VIR 1L	33	18	1010mm	1pc
FB 14	30s	4 PLY VIR	30	26	1045mm	2pc
Flat Cleaning Fillet 26.5mm	31s	4 PLY VIR	40	26.5	8m	8m
Doffer Cleaning Fillet	33s	3 PLY VIR	20	17	15m	15m
RIETER C4/C10/C50/C51						
8 Row Clipped 1010	26s	4 PLY VIR	33	18	1010mm	1pc
FB 15	30s	4 PLY VIR	30	26	1030mm	2pc
FB 24	27s	4 PLY VIR	47.5	10	1030mm	2pc
FB 24(C4)	26s	7 PLY VIR	46	8	1030mm	8m
DB-25 (C4A/C10)	30s	5 PLY VIR	28	7	11m	11m
DB-26 (C-50)	33s	3 PLY VIR	20	17	17m	17m
DB-27 (C-50/C-51)	33s	3 PLY VIR	20	15	13m	13m
TRUTZSCHIER						
TR/DP(Clearer roller fillet)	30s	4 PLY VIR	28	17	10.5m	10.5m
TR/DS(Stripper roller fillet)	32s	3 PLY VIR	40	20	10m	10m
TR/AP(doffer cleaning fillet)	33s	3 PLY VIR	20	17	15m	15m

Flat tops

- Made of Micro-alloyed steel with extra hardened point (EHP)
- We are using a "Multi-layer" Foundation in the cotton Fabric construction, with covering layer of a elastic natural rubber
- The setting pattern is sparse at the fibre entry point and dense towards the exit. The gentle action assures better removal of trash and neps and avoid fibre rupture
- Hardened at the tips of the hooks prolongs its life.
- High technology in backing-off grinding / side grinding to get smooth finish with high sharpness for better carding.

Type	PPSI	Height	F. Angle	Application	Setting Needle
PT 55 (MCH55)	550	7.8mm	72	For super fine count cotton	
PT 52 (MCH52)	520	8mm	72		
PT 45 (MCH45)	450	8mm	72		
PT 42 (MCH42)	420	8mm	72	For medium, OE cotton	
PT 36 (MCH36)	360	8mm	72	For coarse, man made fibres	
PT33(MCH33)	330	8mm	72		
MCB48	520	8mm	74	For medium, fine count cotton	
MCB45	450	8mm	74		
MCB38	380	8mm	74		
MCB30	300	8mm	74	For coarse, man made fibres	
MCZ24	240	7.5mm	74	For coarse, man made fibres	
MCZ18	180	8mm	74	For coarse, man made fibres	





Licker in and feed in

Type of Wire	Height	F. Angle	Pitch	Rib	PPSI	Application
Nt5525x 7215	6.0	20	7.2	1.5	*	Standard
NT6020x 7215	6.0	20	7.2	1.5	*	Standard
NT6015x 8416	6.0	15	8.4	1.6	*	Standard
NT1115x 1020	11.0	15	10	2.0	*	Standard
NT1005x 1222	10.0	5	12	2.2	*	Standard
NT5010x 5032V	5.0	10	5	3.2	40	Standard
NT5015x 5025V	5.0	15	5	2.5	52	Standard
NT5015x 5525V	5.0	15	5.5	2.5	47	Standard
NT5515x 5840V	5.5	15	5.8	4.0	28	Standard
NT5530x 7532V	5.5	30	7.5	3.2	27	Standard
NT7510x 7242V	7.5	10	7.2	4.2	21	Standard

Stripper

Type of Wire	Height	F. Angle	Pitch	Rib	PPSI	Application
Ns3325x 3212	3.3	25	3.2	1.2	168	Standard
NS3325x 3215	3.2	25	3.2	1.5	134	Standard
NS3630x 3212	3.6	30	3.2	1.2	168	Standard
NS4030x 3615V	4.0	30	3.6	1.5	119	For Europe machine
NS4040x 3612V	4.0	40	3.6	1.2	149	For Europe machine
NS5020x 4018V	5.0	20	4	1.8	90	For Europe machine
NS5025x 4018V	5.0	25	4	1.8	90	For Europe machine
NS5040x 3616V	5.0	40	3.6	1.6	112	For Europe machine
NS40-28x 3418	40.0	-28	3.4	1.8	105	Standard
NS4225x 4212	4.2	25	4.2	1.2	128	Standard
NS45-35x 4220	4.5	-35	4.2	2.0	77	Standard

Worker

Type of Wire	Height	F. Angle	Pitch	Rib	PPSI	Application
Nw4235x 2512	4.2	35	2.5	1.2	215	Standard
NW4325x 2110	4.3	25	2.1	1.0	307	Standard
NW4325x 2112	4.3	25	2.1	1.2	256	Standard
NW4335x 2110	4.3	35	2.1	1.0	307	Standard
NW4525x 1810	4.5	25	1.8	1.0	358	Standard
NW4525x 2110	4.5	25	2.1	1.0	307	Standard
NW4740x 2510	4.7	40	2.5	1.0	258	Standard
NW5030x 4021V	5.0	30	4	2.1	77	Pre-Carding
NW5040x 3612	5.0	40	3.6	1.2	149	
NW5040x 4018V	5.0	40	4	1.8	90	

Cylinder

Type of Wire	Height	F. Angle	Pitch	Rib	PPSI	Application
Nc2512x 2850	2.5	12	2.8	0.5	460	water-jet
NC2512x 2060	2.5	12	2	0.6	538	
NC2510x 1880	2.5	10	1.8	0.8	448	
NC2515x 1870	2.5	15	1.8	0.7	512	
NC3015x 1890	3.0	15	1.8	0.9	398	
NC3210x 2080	3.2	10	2	0.8	403	waste spinning
NC3210x 2512	3.2	10	2.5	1.2	215	
NC3215x 1880	3.2	15	1.8	0.8	448	Standard
NC3215x 1810	3.2	15	1.8	1.0	358	Taiwan, Standard
NC3510x 2110	3.5	10	2.1	1.0	307	Standard
NC3815x 3013	3.8	15	3	1.3	165	Standard
NC4010x 3610	4.0	10	3.6	1.0	179	Standard
NC4012x 2510	4.0	12	2.5	1.0	258	Standard

Doffer

Type of Wire	Height	F. Angle	Pitch	Rib	PPSI	Application
Nd4032x 2075	4.0	32	2	0.8	430	
ND4032x 2080	4.0	32	2	0.8	403	Water-jet, hot wind, hot rolling
ND4030x 1890	4.0	30	1.8	0.9	398	
ND4030x 2090	4.0	30	2	0.9	358	
ND4035x 2590	4.0	35	2.5	0.9	287	Standard
ND4035x 2180	4.0	35	2.1	0.8	384	Standard
ND4040x 2590	4.0	40	2.5	0.9	287	Standard
ND4040x 2380	4.0	40	2.3	0.8	351	Standard
ND4240x 2580	4.2	40	2.5	0.8	323	Standard
ND4230x 1890	4.2	30	1.8	0.9	398	Standard
ND4235x 2512	4.2	35	2.5	1.2	215	Standard
ND4335x 2110	4.3	35	2.1	1.0	307	Standard
ND4335x 3212	4.3	35	3.2	1.2	168	Standard
ND4535x 2110	4.5	35	2.1	1.0	307	Standard
ND4535x 2510	4.5	35	2.5	1.0	258.064	Standard
ND4740x 2510	4.7	40	2.5	1.0	258.064	Standard
ND5035x 2810	5.0	35	2.8	1.0	230	Standard

Transfers

Type of Wire	Height	F. Angle	Pitch	Rib	PPSI	Application
Ns4225x 4212	4.2	25	4.2	1.2	128	Standard
NS5020x 4018V	5.0	20	4	1.8	90	Standard
NS5025x 4018V	5.0	25	4	1.8	90	Standard
NS5040x 3616V	5.0	40	3.6	1.6	112	Standard
NS4225x 4212	4.2	25	4.2	1.2	128	Standard

Random

Type of Wire	Height	F. Angle	Pitch	Rib	PPSI	Application
Nr5035x 2810	5.0	35	2.8	1.0	230	Standard
NR5040x 3612	5.0	40	3.6	1.2	149	Standard

Condenser

Type of Wire	Height	F. Angle	Pitch	Rib	PPSI	Application
Nd4035x 2510	4.0	35	2.5	1.0	258	Standard
ND4535x 2510	4.5	35	2.5	1.0	258	Standard
ND5035x 2810	5.0	35	2.8	1.0	230	Standard
ND5035x 2812	5.0	35	2.8	1.2	192	Standard
ND5040x 3610	5.0	40	3.6	1.0	179	Standard
ND5040x 3612	5.0	40	3.6	1.2	149	Standard
ND5040x 5115	5.0	40	5.1	1.5	84	Standard
ND5540x 4013	5.5	40	4	1.3	124	Standard

Take off

Type of Wire	Height	F. Angle	Pitch	Rib	PPSI	Application
NS40-28x 3218	40.0	-28	3.2	1.8	112	Standard
NS45-10x 4515	4.5	-10	4.5	1.5	96	Standard

Metallic card clothing

Cylinder

Type of Wire	Height	F. Angle	Pitch	Rib	PPSI	Application
BC 3220x 1890	3.2	20	1.8	0.9	398	Standard
BC 3612x 1810	3.6	12	1.8	1.0	358	Standard
BC 3612x 2110	3.6	12	2.1	1.0	307	Standard
BC 3815x 3213	3.8	15	3.2	1.3	155	Standard
BC 3812x 1810	3.8	12	1.8	1.0	358	Standard
BC 4012x 2512	4.0	12	2.5	1.2	215	Standard
BC 3807x 1710	3.8	7	1.7	1.0	380	Standard

Doffer

Type of Wire	Height	F. Angle	Pitch	Rib	PPSI	Application
BD 4035x 2590	4.0	35	2.5	0.9	287	Standard
BD 4235x 2510	4.2	35	2.5	1.0	258	Standard
BD 4230x 1890	4.2	30	1.8	0.9	398	Standard
BD 4235x 2110	4.2	35	2.1	1.0	307	Standard
BD 4530x 2110	4.5	30	2.1	1.0	307	Standard
BD 4535x 2210	4.5	35	2.2	1.0	293	Standard
BD 5040x 3210G	5.0	40	3.2	1.0	202	Standard

Stripper

Type of Wire	Height	F. Angle	Pitch	Rib	PPSI	Application
BS 4230x 3212	4.2	30	3.2	1.2	168	Standard
BS 4525x 2510	4.5	25	2.5	1.0	258	Standard
BS 4225x 4212	4.2	25	4.2	1.2	128	Standard

Condenser

Type of Wire	Height	F. Angle	Pitch	Rib	PPSI	Application
BH 3555x 2885	3.5	55	2.8-3.4	0.9	271	Standard
BH 3540x 3710	3.5	40	3.7-4.73	1.0	174	Standard

Transfers

Type of Wire	Height	F. Angle	Pitch	Rib	PPSI	Application
BT 4230x 3212	4.2	30	3.2	1.2	168	Standard
BT 4225x 4212	4.2	25	4.2	1.2	128	Standard
BT 3630x 3212	3.6	30	3.2	1.2	168	Standard

Metallic card clothing

Worker

Type of Wire	Height	F. Angle	Pitch	Rib	PPSI	Application
BW 4230x 2510	4.2	30	2.5	1.0	258	Standard
BW 4230x 2512	4.2	30	2.5	1.2	215	Standard
BW 4230x 3212	4.2	30	3.2	1.2	168	Standard
BW 4525x 1810	4.5	25	1.8	1.0	358	Standard
BW 4525x 2110	4.5	25	2.1	1.0	307	Standard
BW 4525x 2510	4.5	25	2.5	1.0	258	Standard
BW 4535x 1810	4.5	35	1.8	1.0	358	Standard
BW 4535x 2110	4.5	35	2.1	1.0	307	Standard
BW 4535x 2510	4.5	35	2.5	1.0	258	Standard
BW 5040x 2510	5.0	40	2.5	1.0	258	Standard

Licker in & Feed in

Type of Wire	Height	F. Angle	Pitch	Rib	PPSI	Application
BT 3240x 6030V	3.2	40	6	3.0	36	Standard
BT 3240x 8630V	3.2	40	8.6	3.0	25	Standard
BT 5025x 5415	5.0	25	5.4	1.5	*	Standard
BT 5030x 4215	5.0	30	4.2	1.5	*	Standard
BT 5020x 5415	5.0	20	5.4	1.5	*	Standard
BT 5030x 3718	5.0	30	3.7	1.8	*	Standard
BT 6025x 6415	6.0	25	6.4	1.5	*	Standard
BT 5520x 5415	5.5	20	5.4	1.5	*	Standard
BT 5530x 6415	5.5	30	6.4	1.5	*	Standard
BT 5020x 8515	5.0	20	8.5	1.5	*	Standard
BT 5020x 1015	5.5	20	10	1.5	*	Standard
BT 5107x 8515	5.1	7	8.5	1.5	*	Standard
BT 5430x 4210	5.4	30	4.2	1.0	*	Standard
BT 5430x 3210	5.4	30	3.2	1.0	*	Standard
BT 4230x 4210	4.2	30	4.2	1.0	*	Standard
BT 4230x 3210	4.2	30	3.2	1.0	*	Standard
BT 6030x 6415	6.0	30	6.4	1.5	*	Standard
BT 8015x 9620	8.0	15	9.6	2.0	*	Standard



Interlocking card clothing

Type of Wire	Height	F. Angle	Pitch	Rib	PPSI	Application
3740 x 6030V	3.7	40	6	3.0	36	Standard
3740 x 6040V	3.7	40	6	4.0	27	Standard
3740 x 8040V	3.7	40	8	4.0	20	Standard
3740 x 8430V	3.7	40	8.4	3.0	26	Standard
3740 x 8440V	3.7	40	8.4	4.0	19	Standard
50(-6) x 7840V	5.0	-6	7.8	4.0	21	Standard
5615 x 7040V	5.6	15	7	4.0	23	Standard
5240 x 4225V	5.2	40	4.2	2.5	61	Standard
3642 x 4010V	3.6	42	4	1.0	161	Standard
3642 x 5510V	3.6	42	5.5	1.0	117	Standard
3642 x 4008V	3.6	42	4	0.8	202	Standard
3642 x 5508V	3.6	42	5.5	0.8	147	Standard
4230 x 3621V	4.2	30	3.6	2.1	85	Standard
5240 x 4230V	5.2	40	4.2	3.0	51	Standard
4225 x 4225V	4.2	25	4.2	2.5	61	Standard
5240 x 4225V	5.2	40	4.2	2.5	61	Standard
3740 x 5025V	3.7	40	5	2.5	52	Standard
3740 x 6025V	3.7	40	6	2.5	43	Standard
4715 x 5525V	4.7	15	5.5	2.5	47	Standard
4730 x 3621V	4.7	30	3.6	2.1	85	Standard
4730 x 3618V	4.7	30	3.6	1.8	100	Standard
4720 x 3621V	4.7	20	3.6	2.1	85	Standard
5505 x 8112V	5.5	5	8.1	1.2	66	Standard
5630 x 6526V	5.6	30	6.5	2.6	38	Standard
5530 x 6532V	5.5	30	6.5	3.2	31	Standard
8030 x 8520V	8.0	30	8.5	2.0	38	Standard
5520 x 9412V	5.2	20	9.4	1.2	57	Standard
5025 x 5221V	5.0	25	5.2	2.1	59	Standard
5020 x 6525V	5.0	20	6.5	2.5	40	Standard
5028 x 4318V	5.0	28	4.3	1.8	83	Standard
5020 x 5221V	5.0	20	5.2	2.1	59	Standard

Flexible card clothing

- Full range of flexible card clothing supplied.
- Adapt to high-speed high-yield.
- Consistent product quality.
- Advance Heat Treated, teeth hardened, high wear resistance, long life.

Flexible card clothing Foundation

- Sponge Rubber 3.25mm to 4.25mm plus 5 to 11 ply cotton cloth
This type of foundation have oil and life resistance, suitable for different type of colorful corase woolen carding or waste carding, easy cleaning,
- Vulcanized Rubber plus 3 to 12 ply cotton cloth
This type of foundation have super opening capacity, strong grip strength, suitable for different type of synthetic, asbestos and regenerated fibres
- Wool felt plus 6 to 9 ply cotton cloth
This felt foundation have done special process, without fluff, suitable for fine count woolen or cashmere.
- Rubber+wool felt plus 4 to 11 ply cotton cloth
This type of foundation have the advantages of flexibility and also easy cleaning, suitable for colorful fibres too.
- 1 ply white back cloth or orange back cloth to ensure the wires stability

Flexible card clothing Steel wires




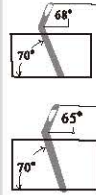
Surface treatment of steel wire:

- Standard Wire Stand type bright wire, normal service life
- Zinc coated wire Rust Protection, extend the service life
- Chromeplate wire Rust Protection, extra surface hardness, increase the card clothing strength
- Stainless Steel Wire Without any rust, the maximum extended the card clothing life, mainly used for fancy


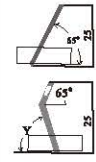


Flexible card clothing

Specifications:

Shape	Wire section	Foundation	Cylinder		Doffer		Transfer		Worker		Stripper		Cleaner	
			60	57.2	60	50.8	44.5		38.1		38.1 28.6		25.4	
			Height	Angle	Height	Angle	Height	Angle	Height	Angle	Height	Angle	Height	Angle
		Sponge Rubber+cotton cloth	10.5	68	10.5	68	10.5	65	10.5	65	10.5	65	10.5	65
		Vulcanized Rubber+cotton cloth	10	62	10	62	10	62	10	62	10	62	10	62
		Wool felt+cotton cloth	11.9	68	11.9	68	10	65	10	65	10	65	10	65
		Rubber+wool felt+cotton cloth	11.9	68	11.9	68	10	65	10	65	10	65	10	65

Fancy specifications

Shape	Wire section	Foundation	Y	X	Height	Setting width		
		Sponge Rubber+cotton cloth	75					
		Wool felt+cotton cloth	70	65	25mm	47.6mm	46mm	38.1mm
		Rubber+wool felt+cotton cloth	70					

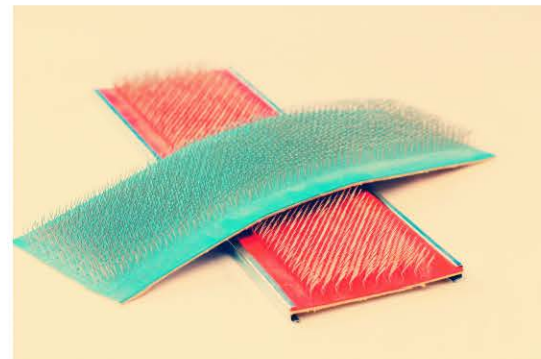
Fancy Density:

Steel wire			PPSI		
Count	Dia.	Standard	Count	Dia.	Standard
26	0.48	40	31	0.33	140
27	0.43	60	32	0.305	160
28	0.405	80	33	0.28	180
29	0.38	100	34	0.255	200
30	0.355	120	35	0.23	



Hand card brush Specifications

Steel wire			Foundation	Size
Count	Dia.	PPSI Standard		
26	0.48	90	4ply(5ply or 3ply) rubber+cotton cloth	256mm length* 89mm width
28	0.405	105		
30	0.355	115	5ply cotton cloth	
32	0.305	125		

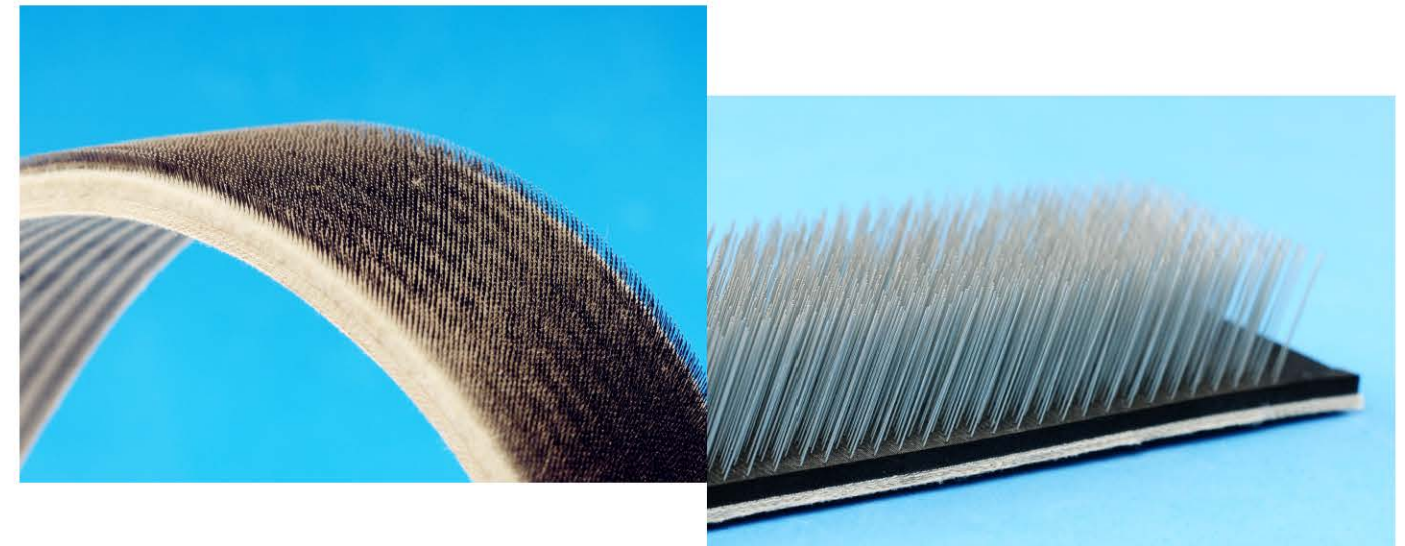


Flexible card clothing Standard wire No. and density

** metric	Steel Wire		PPSI	Steel Wire		PPSI
	Count	Dia.	Standard	Count	Dia.	Standard
10	26	0.48	160	20/24	0.91/0.58	120
12	27	0.43	200	21/25	0.81/0.53	140
14	28	0.405	240	22/26	0.71/0.48	160
16	29	0.38	280	23/27	0.63/0.43	180
18	30	0.355	320	24/28	0.58/0.405	200
20	31	0.33	360	25/29	0.53/0.38	220
22	32	0.305	400	26/30	0.48/0.355	240
24	33	0.28	440	27/31	0.43/0.33	260
26	34	0.255	480	28/32	0.405/0.305	280
28	35	0.23	520	29/33	0.38/0.28	300
30	35	0.23	560	30/34	0.355/0.255	320

Flexible card clothing maintenance

- Before mounting, please open the packing of card clothing to keep 24 hours in work shop, its to be seasoned with the air condition of workshop.
- Because of the difference of Carding machine dia./ move balance/ mounting tension of "Woolen factory" and "card clothing factory", after the mounting of new card clothing, we have to ensure the smooth surface of card clothing, otherwise, we have to keep continue grinding.
- After the card clothing running around 25 days, re-grinding it.
- According to the different raw material and carding production, pls keep regular grinding every 4-6 months.



Raising fillet Specifications

Code	Type	Foundation	Count	Total height	Working angle	PPSI	Width	length	Application
1	SY-1	3ply red rubber+Back Cloth	27/31	9.5	42	290	23	122	For woven wool cloth, poloar flecee, mink blanket, any type of cotton fabric
2	SY-2	3ply red rubber+Back Cloth	28/32	9.5	42	300	23	122	For woven wool cloth, poloar flecee, mink blanket, any type of cotton fabric
3	SY-3	3ply red rubber+Back Cloth	29/33	9.5	42	310	23	122	For woven wool cloth, poloar flecee, mink blanket, any type of cotton fabric
4	RA-2	3ply red rubber+Back Cloth	27/31	10	40	310	23	122	For poloar flecee, mink blanket, any type of cotton fabric
5	RA-1	3ply red rubber+Back Cloth	27/31	9.5	40	310	23	122	For poloar flecee, mink blanket, any type of cotton fabric
6	RA-3	3ply red rubber+Back Cloth	28/32	9.5	48	330	23	122	For soft mink blanket, cotton fabric, polyester made fabric
7	RT-15	3ply red rubber+Back Cloth	30's	11	80	250	23	122	Straight for above 4 type bend
8	N-20	4ply red rubber+Back Cloth	25/32	11	42	310	20	145	For Shoody yarn
9	NRT	3ply red rubber+Back Cloth	30's	11	80	250	20	145	Straight for N-20
10	RA-22	6ply felt rubber+Back Cloth	33's	11	65	230	23	122	For warp knitting fabric
11	RA-23	6ply felt rubber+Back Cloth	31's	11	45	210	23	122	For warp knitting fabric
12	SF-1	3ply red rubber+Back Cloth	26/30	9.8	40	300	23	122	For super soft fabric
13	SF-2	3ply red rubber+Back Cloth	27/31	9.8	40	310	23	122	For super soft fabric
14	SY-4	4ply red rubber+Back Cloth	27/31	11	40	280	23	122	For high speed wool carding
15	SY-5	3ply red rubber+Back Cloth	29/33	10	45	310	23	122	For Coral velvet
16	SY-6	3ply red rubber+Back Cloth	27/31	9.5	44	330	23	122	For Suede Fabric
17	SY-7	3ply red rubber+Back Cloth	34's	10.5	42	360	23	122	For carshmere
18	SY-8	3ply red rubber+Back Cloth	29/33	10	48	350	23	122	For cony hair, carshmere, Al barca hair
19	SY-9	7ply felt+Back cloth	33	11	80	190	50.8	120	For man made mohair fiber
20	SY-10	3 ply red rubber+Back cloth	28	11	80	250	23	122	For man made mohair fiber
21	SY-11	3ply red rubber+Back Cloth	32	30	78	260	38.1	61	Brushing fillet(Straight)
22	SY-12	5ply red rubber+Back cloth	27/31	30	82	300	26	35	Pile raising fillet(Straight and bend both avaiable)
23	SY-13	7ply felt+Back cloth	31	29	85	180	90	Any	Raising brush(Straight)

